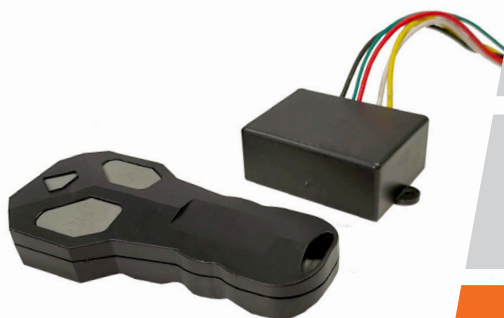


OPERATING / WIRING INSTRUCTIONS

for WX1000 (12V) and WX1001 (24V)
Remote and Receiver Set



TO ACTIVATE

Press both buttons at the same time for 5 seconds until the LED light is up.

TURN OFF

Press both buttons at the same time for 5 seconds until the LED light turns off.

CAUTION

The remote will automatically power off after 2 minutes of inactivity.



BLACK = EARTH
RED = POSITIVE
WHITE = OUTPUT - OUT
YELLOW = OUTPUT - IN
GREEN = AERIAL (don't connect)
May not be visible

